



CITY OF OLATHE, KANSAS

ASSISTANT FIRE CHIEF / FIRE MARSHAL

\$113,360 - \$175,603 DOQ

Plus Excellent Benefits, including a \$5,000 hiring bonus.

Apply by

November 17, 2024

(First Review. Open Until Filled)

PROTHMAN



THE COMMUNITY



Olathe, Kansas, has evolved from its historic roots as a key stop along the Santa Fe, Oregon, and California trails into a vibrant, fast-growing city that offers an exceptional quality of life. As the second-largest city in Johnson County and the fourth-largest in the state, Olathe boasts a population of approximately 153,772 residents. As a part of the Kansas City metropolitan area, Olathe enjoys the benefits of suburban living while maintaining easy access to the cultural, entertainment, and economic opportunities of a major urban center.

Olathe's rapid growth and economic expansion have made it a prime destination for families and businesses alike. Olathe has transformed from a bedroom community into a key player in the Kansas City metropolitan area, attracting residents who seek a strong economy and a welcoming community.

Residents of Olathe enjoy access to 42 neighborhood and community parks, 45 miles of public trails, and numerous recreational facilities, including lakes, sports complexes, and green spaces. Additionally, the city's family-friendly atmosphere is enhanced by its safe neighborhoods and community-focused amenities, such as local farmers markets, festivals, and events. The city's commitment to outdoor living and safety is complemented by its excellent public services, including full-time police and fire departments, as well as well managed water, wastewater, and refuse programs.

Olathe is also known for its top-rated public schools which consistently rank among the best in Kansas. The City is home to institutions such as MidAmerica Nazarene University and the Kansas School for the Deaf, adding to its educational appeal.



Olathe's strategic location along major highways make it an ideal base for those who want proximity to both the conveniences of Kansas City and the tranquility of suburban life. With its robust infrastructure, low cost of living, and emphasis on community well-being, Olathe continues to be an attractive place for individuals and families looking to build a future in a beautiful growing city.

THE CITY

Olathe operates under a modified mayor-council-manager form of government, established in 1986 through Charter Ordinance No. 28. In this system, the Mayor and two at-large Council members are elected by the entire City, while four additional Council members represent specific wards. The Mayor and Council members serve staggered four-year terms, collectively forming the City Council. The City Council serves as the policy-making body, passing resolutions and ordinances, approving the budget, appointing advisory board members, and hiring key positions such as the City Manager, Municipal Judge, and City Auditor.

The City provides a range of services, including public safety (police and fire), highways and streets, sanitation, health and social services, culture/recreation, education, public improvements, water and sewer, planning and zoning, and general administrative services. The Olathe City Manager provides direct oversight of all City Departments, including Police, Fire, Legal, and the City's four focus areas. Quality of Life, Infrastructure, Exceptional Services, and Economy are focus areas that support the overall work of the City.

Olathe's operates on a 2024 total budget of \$571,392,179, with 1,114 full-time equivalent (FTE) employees supporting the City's operations and services.

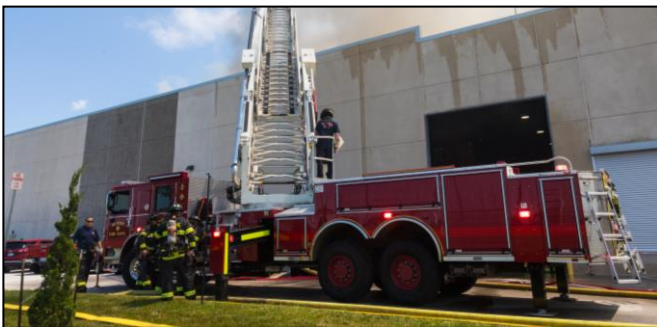


THE DEPARTMENT

The Olathe Fire Department operates with a total budget of \$31,078,940 for 2024 and is staffed by 162 full-time employees working across A, B, and C shifts. The department serves a 64.99-square-mile area, providing emergency response through eight fire stations and ten apparatus. The Fire Department is divided into three sections which include Planning & Administration, Emergency Services, and Community Risk Reduction. Every day, at least 39 firefighters are on-duty, ready to respond to emergencies and provide life-saving services. In 2023, the department responded to 15,032 calls for service, including 338 fire calls, 9,615 EMS calls, and 5,079 non-fire-related calls.

The department is proud to hold both an ISO Class 1 rating and accreditation from the Commission on Fire Accreditation International (CFAI), placing it among just over 100 agencies worldwide with this dual distinction. This high level of service is reflected in the department's 95% satisfaction rating and its role in protecting \$15.7 billion in property within the Olathe community.

The department celebrated 150 years of dedicated service to the Olathe community in 2021, further demonstrating its long-standing commitment to public safety and excellence in fire protection.



THE POSITION

Under the general direction of the Fire Chief, the Assistant Fire Chief / Fire Marshal manages and coordinates services and activities in the Fire Department related to community risk reduction programs and services. The Community Risk Reduction (CRR) Section is supported by a dedicated team that includes one part-time Administrative Assistant, two full-time staff members under the Fire Codes Division, and six full-time and six part-time personnel under the Fire Prevention Division. The responsibilities for this position include considerable time spent managing and overseeing the daily operations of two divisions, coaching and developing their teams, and participating in strategic functions which include budget preparation, strategic planning, and providing state and local public fire protection consulting. To view the full responsibilities of the Assistant Fire Chief / Fire Marshal, please view the job description found [here](#).

OPPORTUNITIES & PRIORITIES

Code Adoption and Compliance Modernization

- **Opportunity:** Oversee the adoption of updated fire codes, safety regulations, and building codes in line with national and regional standards. As building technologies and materials evolve, the Fire Marshal has an opportunity to ensure that the city stays compliant with the latest fire safety measures.
- **Priority:** Facilitate the seamless integration of these codes through collaboration with city planners, developers, and inspectors. Educate both internal teams and external stakeholders on the importance of these updated codes to enhance public safety.

Strengthening Community Engagement and Public Education

- **Opportunity:** Enhance fire prevention initiatives through public education and outreach. The role provides a chance to be the face of fire safety and foster relationships with community organizations, businesses, and the public.
- **Priority:** Build strong community connections by developing fire safety education programs for schools, businesses, and residents. This includes strengthening fire preparedness and response plans and encouraging community-wide participation in safety programs.

People Skills, and Team Leadership Development

- **Opportunity:** Lead and motivate the fire department's Community Risk Reduction staff, focusing on fostering a positive culture, effective communication, and strong relationships within the team.
- **Priority:** Use strong interpersonal skills to support career development, promote leadership opportunities, and resolve conflicts within the team. Building trust and open communication will ensure that both operational and morale-related goals are achieved, while keeping the team aligned with the department's broader objectives.

EDUCATION AND EXPERIENCE

A bachelor's degree with major coursework in fire science, fire administration, public administration or a related field, and four (4) years of increasingly responsible fire services experience, including one (1) year of administrative and supervisory responsibilities is required.

A master's degree is preferred, and completion of the National Fire Academy's Executive Officer Program (EFOP) or equivalent advanced fire management training is preferred.

Candidates must have a valid driver's license and favorable driving record.

The selected candidate must have, or complete within one year or as available, Kansas Fire Inspector I certification from the State of Kansas, must meet National Fire Protection Association (NFPA) 1031 requirements for Fire Inspector I and II, and shall have completed coursework in Fire Inspection Principles and Structures and Systems offered by the National Fire Academy, Emmitsburg, Maryland, or an equivalent course.

Arson Investigator level II certification from the State of Kansas is also required within two (2) years after starting this position. The selected candidate must enroll and complete the Executive Fire Officer Program of the National Fire Academy and maintain fire and/or EMT certification.

Proficiency with verbal and written English language is required.

COMPENSATION & BENEFITS

- **\$113,360 - \$175,603 DOQ**
- **\$5,000 hiring bonus**
- Health, Vision and Dental Insurance
- Flexible Spending Account
- Group Term Life and AD&D Insurance
- Group Long-Term Care Insurance
- Kansas Police & Fireman's Retirement System (KP&F)
- Deferred 457 Retirement Plans with up to 3% employer match
- Educational Reimbursement up to \$2,500 per year for tuition and books
- 11.5 paid Holidays
- Vacation and Sick Leave
- 8 weeks of Paid Parental Leave
- Employee Assistance Program
- Wellbeing Center



To learn more about the
City of Olathe, please visit:
www.olatheks.gov

The City of Olathe is an Equal Opportunity Employer. All qualified candidates are strongly encouraged to apply by **November 17, 2024** (first review, open until filled). Applications, supplemental questions, resumes and cover letters will only be accepted electronically. To **apply online**, go to **www.prothman.com** and click on "**Open Recruitments**", select "**City of Olathe, KS – Assistant Fire Chief / Fire Marshal**" and click "**Apply Online**," or click [here](#). Resumes, cover letters, and supplemental questions can be uploaded once you have logged in.



www.prothman.com

206.368.0050